

ACOUSTIC PERFORMANCE

IMPACT L_nTW = 51dB AIRBORNE D_nTW = 58dB D_nTW + CTR = 50dB

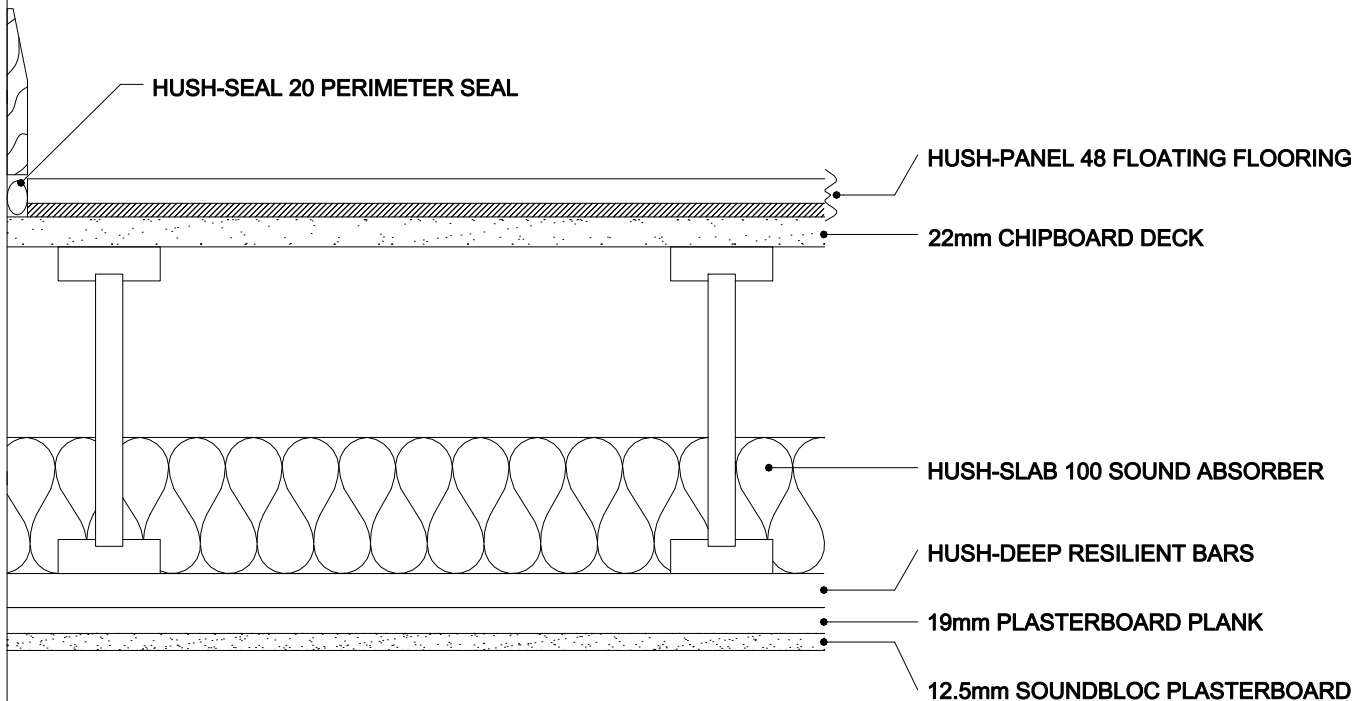
RESULTS BASED ON THE FULL HUSH SYSTEM HD1029 BEING USED WITHIN
TIMBER FRAME CONSTRUCTION WITH A MINIMUM OF A 225mm I JOINT.

SPECIFICATION

HUSH PANEL 48, ALL T&G JOINTS TO BE GLUED USING HUSH-BOND ADHESIVE,
LAID OVER FLOOR DECK, AS PER MANUFACTURE'S INSTRUCTIONS, WITH ALL
PERIMETERS SEALED USING HUSH-SEAL 20.

HUSH-SLAB 100 FITTED BETWEEN JOISTS WITH HUSH-BAR DEEP FIXED TO THE
UNDERSIDE OF THE JOISTS AT 450mm CENTRES AND AT RIGHT ANGLES TO
THE JOISTS.

19mm PLASTERBOARD PLANK AND 12,5mm SOUNDBLOC SECURED TO HUSH-BAR
DEEP RESILIENT BARS. SEAL ALL PERIMETERS PRIOR TO SKIMMING.



HUSH (UK) LTD
HUSH-SYSTEM TF
HD1029